

How Industry Puts Cletracs to Work!

- Highway construction and maintenance
- Street repair and municipal projects
- Airport building and maintenance
- Snow removal from roads, streets, sidewalks
- Real estate and subdivision development
- Land clearing, grading, dragging
- Excavating and earthmoving
- Bull-dozing, ditch digging, back-filling
- Laying pipe, erecting poles, stringing lines
- Loading, unloading and spotting freight cars
- Hauling materials in and around factories
- Logging work—snaking, hauling, loading
- “Pulling” casing and rods, trench work, hoisting and moving equipment in the oil fields
- Stripping, loading and hauling at mines and quarries
- Operating hoists and conveyors at wharves
- Golf course building and maintenance

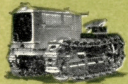
These are but a few of the many uses which Cletracs are serving. Wherever there is work demanding sure-footed, abundant, low-cost power, you will find one of the five famous Cletrac Crawlers, shown below to perfectly match your requirements.

Cletrac

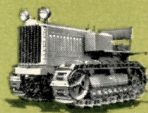
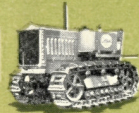
20



20

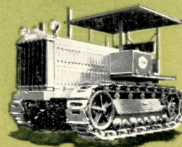
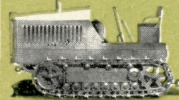


30

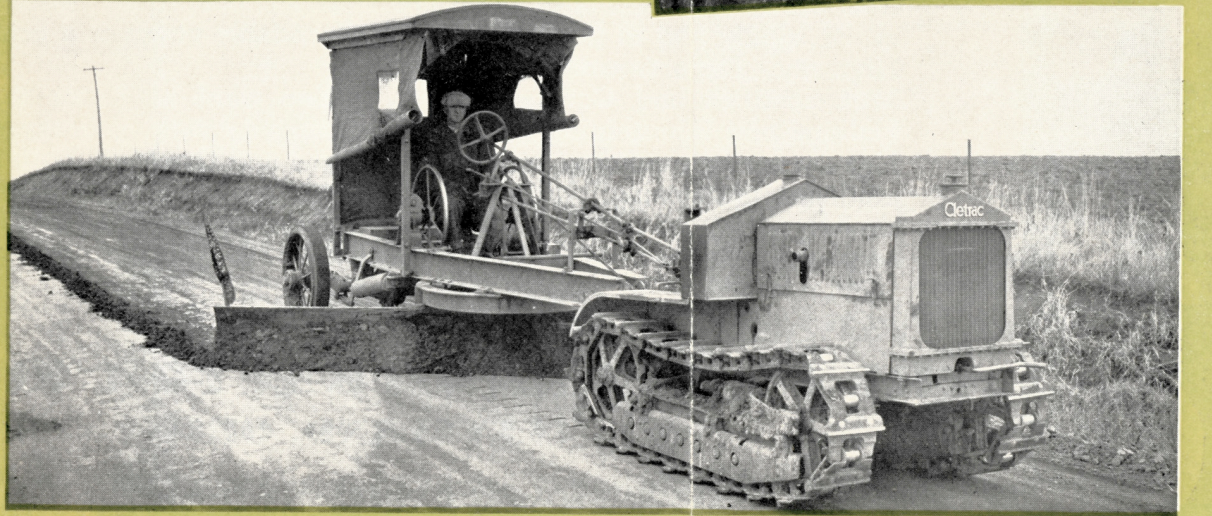
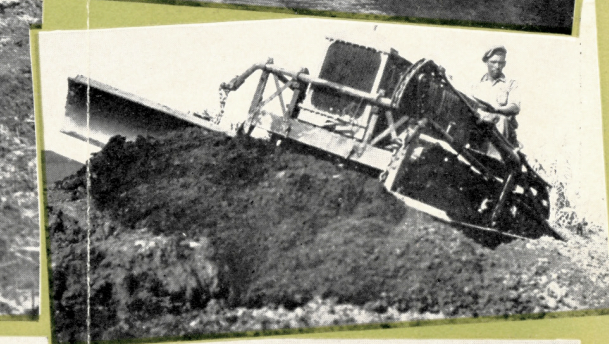
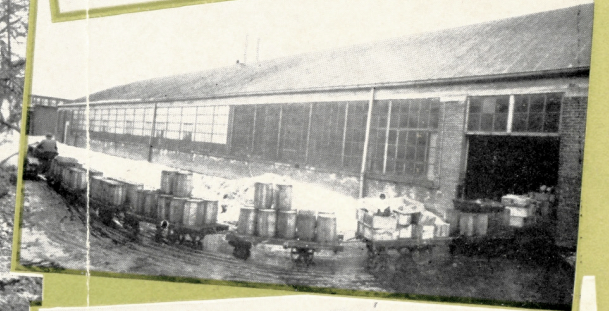


40

80-60



100



C
L
E
V
E
L
A
N
D
T
R
A
C
T
O
R
C
O

A Powerful, Flexible Small Size Unit Fully Covering the Field of lighter Industrial work

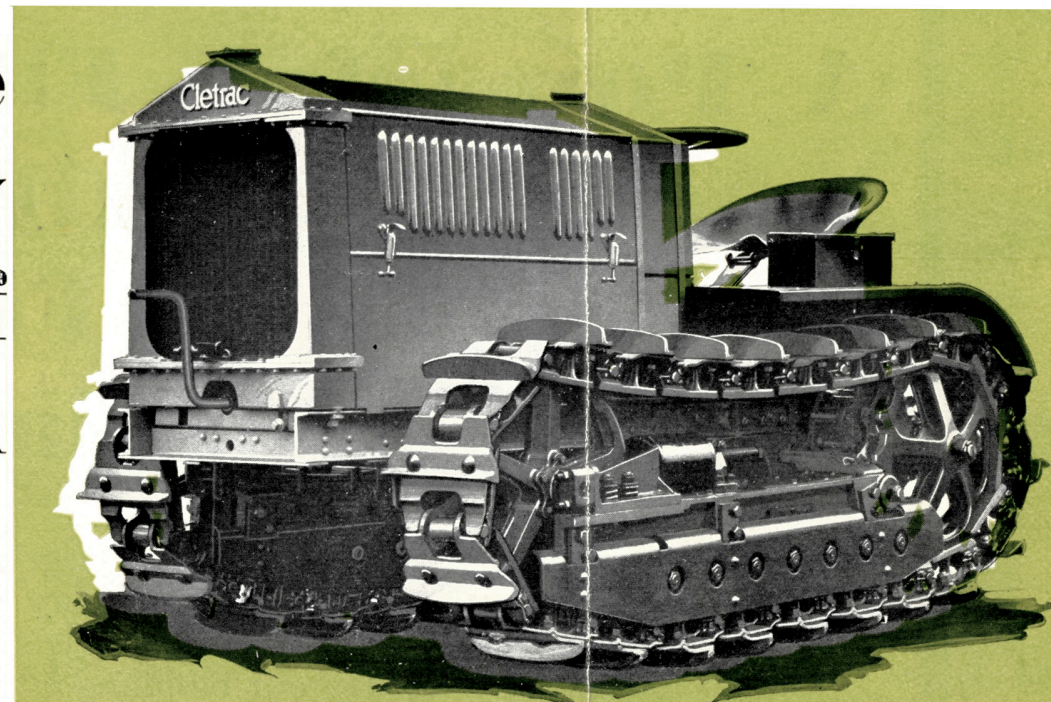
NO other tractor rating covers so large a span of work in the industrial field as the twenty horse-power of this sturdy *Cletrac* "20." Because it is thoroughly adequate for day in and day out handling of the very largest loads within its rating, but at the same time is never too costly to operate on small jobs, it is one of the most widely useful tractors on the market.

This broad scope of utility of the *Cletrac* "20" makes it a unit of outstanding popularity with users of tractor power in every field of industrial work. Thousands of them are in use, singly and in fleets, by State Highway Departments, Counties, Municipalities and Contractors for building and maintaining roads and highways, earth moving, excavating, grading, bull-dozing, hauling and similar work. In addition, they are employed in real estate develop-

ment, golf course work, interdepartment hauling and freight car spotting at industrial plants, logging, oil field work and for literally scores of other operations where ample dependable power is a prime requisite.

You want a tractor that combines capacity with economy—that is rugged and thorough, both in build and performance. That is why you can make no mistake in selecting the *Cletrac* "20" for your work

THE CLEVELAND TRACTOR COMPANY
CLEVELAND, OHIO



SPECIFICATIONS

MOTOR—Four cylinder, four cycle, water-cooled, valve-in-head, cylinders cast en bloc, 4 inch bore by 5½ inch stroke.

MOTOR LUBRICATION—Force-feed lubrication to crank shaft and connecting rods. Splash lubrication to cam shaft, cylinder walls, pistons, rings and wrist pins. Pressure supplied by gear type oil pump.

IGNITION—Ignition by high tension Eisemann magneto with impulse starter.

GOVERNOR—Fly ball governor to throttle valve of carburetor.

CARBURETOR AND FUEL SYSTEM—Tillotson carburetor. Manifold designed for both kerosene and gasoline. The fuel tank has a capacity of 11 gallons in the main tank and ¾ of a gallon in the auxiliary tank.

CLARIFIER—All air entering the carburetor is cleaned by Pomona clarifier.

CLUTCH—Borg and Beck, pull type design, single plate, 10 inch diameter.

TRANSMISSION AND SPEEDS—Selective type, two speeds forward and one reverse. Low speed is 2.25 miles per hour. High speed is 4.5 miles per hour. Reverse speed is 1.75 miles per hour. Heavy-duty ball bearings are used throughout. Lubrication of transmission is provided by the gears running in an oil bath.

STEERING—Steering is accomplished by the effect of the motor through planetary compensating gears. As pressure is applied to either side of the steering brake

drums by the steering gear, it slows down the track on the side to which pressure is applied, causing the opposite track to speed up.

DRIVE SPROCKETS—The drive sprockets are of cast steel, heat-treated, and are supported on extra large shafts mounted in heavy-duty ball bearings.

TRACKS AND TRACTIVE SURFACE—The track shoes are 9½ inches wide, 8 9/16 inch pitch. Grouters are 2¼ inches high, 12 inches wide. There are twenty-two heat-treated carbon steel shoes in each track, having 1½ inch diameter carbonized and hardened steel track shoe pins. The bushings and rollers are carbonized and hardened. Length on ground each side is 61 inches. The total tractive surface is 1,160 square inches. Ground pressure is 4.14 pounds per square inch.

GENERAL DIMENSIONS—Length over all, 99 inches. Width over all, 48½ inches. Height over all, 52 inches. Ground clearance, 8 inches. Center to center of tracks, 39 inches.

TURNING RADIUS—Turning radius is 9 feet.

RATINGS—At the draw bar, 20 horse power. At the power pulley, 27 horse power.

POWER PULLEY AND TAKE-OFF—EXTRA EQUIPMENT—Attachment furnished with or without belt pulley. Pulley is of 12 inch diameter, 6 inch face. Operated at 860 RPM at a belt speed of 2,700 feet per minute, and motor speed of 1,375 RPM. The power take-off speed is 680 RPM at motor speed of 1,375 RPM.

T
W
E
N
T
Y